

## Window Washing Anchors

---

# Anchor employees and contractors while working on building facades

### Keep Workers Safe with Window Washing Anchors

Regular window washing and façade maintenance helps to maintain the appearance of high-rise buildings but often requires maintenance staff and outside contractors to work at heights utilizing suspended rope access systems. The foundation of every suspended rope access system is anchorage that meets or exceeds all OSHA regulations and ANSI guidelines.



**Elevating safety standards**

**FallProtect.com**

# Why Our Window Washing Anchors?



Meet and exceed OSHA fall protection standards



Designed by on-staff engineering team



Fabricated by certified welders



May be customized to suit project-specific needs



Galvanized steel construction and stainless-steel connection points



Corrosion resistance and long term compliance



Certifications and associations

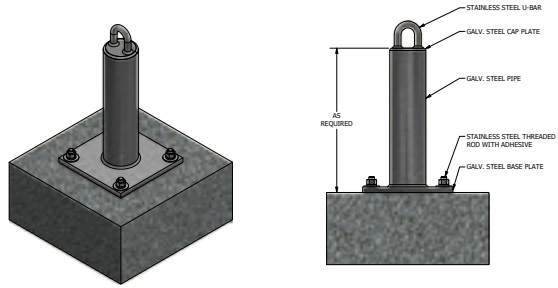


## RA-100

### Post-Install Concrete Roof Anchor

Designed with four high-strength fasteners for post-installation to concrete slabs.

- Stainless Steel: Type 304 (FY = 30 KSI)
- Steel Pipe: ASTM A500 (FY = 42 KSI)
- Steel Plate: ASTM GR50 (FY = 50 KSI)
- SS Threaded Rod: Type 304 (FY = 50 KSI)

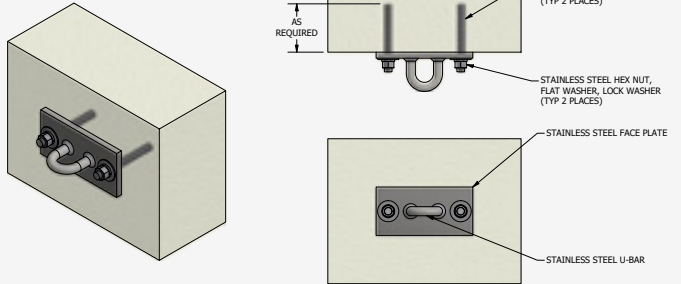


## WA-1001

### Post-Install Concrete Wall Anchor

Used for long-lasting attachment to concrete walls, curbs and pre-cast panels.

- Stainless Steel: Type 304 (FY = 30 KSI)
- SS Threaded Rod: Type 304 (FY = 50 KSI)

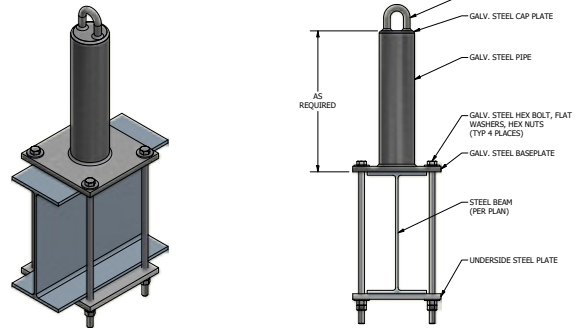


## RA-4700

### Beam Wrap Roof Anchor

Attach to steel structures without the need for welding operations in retrofit applications.

- Stainless Steel: Type 304 (FY = 30 KSI)
- Steel Pipe: ASTM A500 (FY = 42 KSI)
- Steel Plate: ASTM GR50 (FY = 50 KSI)
- Galvanized Bolts: ASTM A307A (FU = 60 KSI)

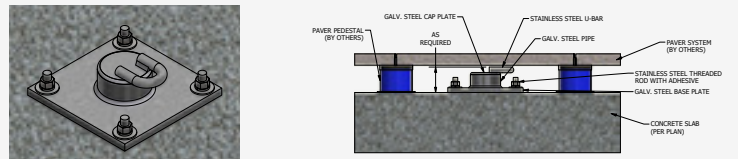


## RA-1000-P

### Below Paver Roof Anchor

Allows for compliant connections and seamless integration with architectural finishes.

- Stainless Steel: Type 304 (FY = 30 KSI)
- Steel Pipe: ASTM A500 (FY = 42 KSI)
- Steel Plate: ASTM GR50 (FY = 50 KSI)
- SS Threaded Rod: Type 304 (FY = 50 KSI)

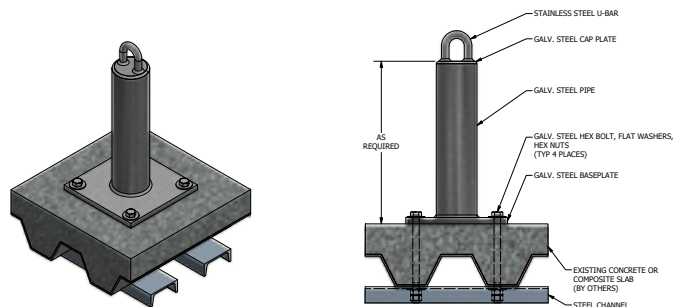


## RA-4000-4

### Bolt Through Roof Anchor

Allows for attachment through concrete slabs with underside steel reinforcement members.

- Stainless Steel: Type 304 (FY = 30 KSI)
- Steel Pipe: ASTM A500 (FY = 42 KSI)
- Steel Plate: ASTM GR50 (FY = 50 KSI)
- Steel Channel: ASTM A36 (FY = 36 KSI)
- Galvanized Bolts: ASTM A307A (FU = 60 KSI)

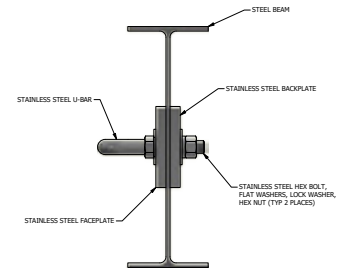
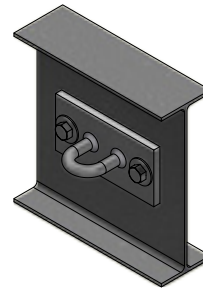


## WA-4000

### Bolt Through Steel Wall Anchor

Provides a secure point of designated connection to withstand fall protection anchor loads.

- Stainless Steel: Type 304 (FY = 30 KSI)

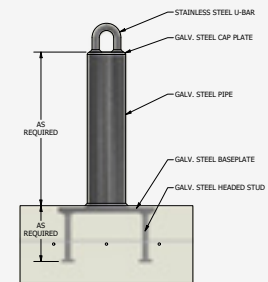
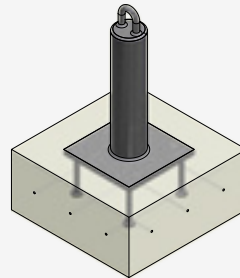


## RA-2400

### Cast in Place Roof Anchor

Cast into concrete slabs at the time of concrete placement for a single, streamlined assembly.

- Stainless Steel: Type 304 (FY = 30 KSI)
- SS Threaded Rod: Type 304 (FY = 50 KSI)

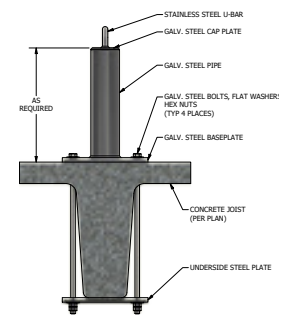
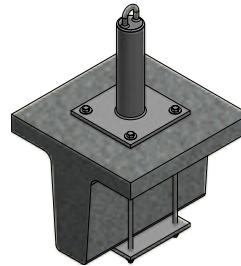


## RA-4700-CJ

### Concrete Joist Wrap Anchor

Engage joists, bolts and underside plates for attachment to concrete slabs.

- Stainless Steel: Type 304 (FY = 30 KSI)
- Steel Pipe: ASTM A500 (FY = 42 KSI)
- Steel Plate: ASTM GR50 (FY = 50 KSI)
- Galvanized Bolts: ASTM A307A (FU = 60 KSI)

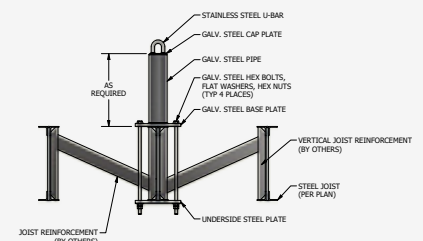
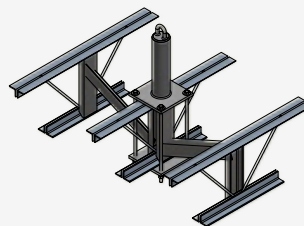


## RA-4500-JW

### Joist Wrap Roof Anchor - New Construction

Ideal for open web steel joists requiring supplemental reinforcement.

- Stainless Steel: Type 304 (FY = 30 KSI)
- Steel Pipe: ASTM A500 (FY = 42 KSI)
- Steel Plate: ASTM GR50 (FY = 50 KSI)
- Galvanized Bolts: ASTM A307A (FU = 60 KSI)

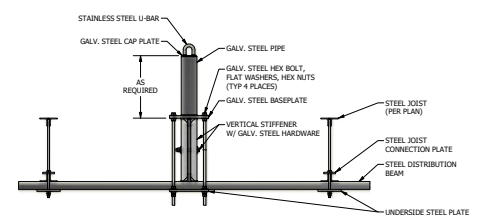
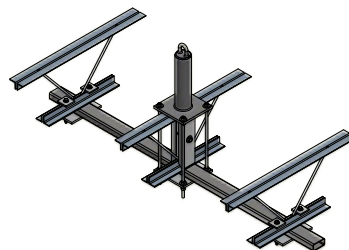


## RA-4500-JWDB2

### Joist Wrap Roof Anchor – Retrofit

Existing open web steel joists can be reinforced with bolted attachments.

- Stainless Steel: Type 304 (FY = 30 KSI)
- Steel Pipe: ASTM A500 (FY = 42 KSI)
- Steel Plate: ASTM GR50 (FY = 50 KSI)
- Steel Channel: ASTM A36 (FY = 36 KSI)
- Steel Tube: ASTM A500 (FY = 46 KSI)
- Galvanized Bolts: ASTM A307A (FU = 60 KSI)

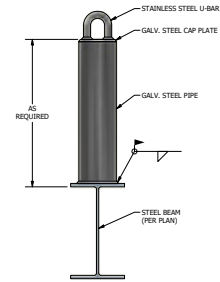
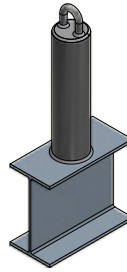


## RA-3400

### Weldable Roof Anchor

Anchors configured for field welded attachment to a steel beam top flange.

- Stainless Steel: Type 304 (FY = 30 KSI)
- Steel Pipe: ASTM A500 (FY = 42 KSI)
- Steel Plate: ASTM GR50 (FY = 50 KSI)

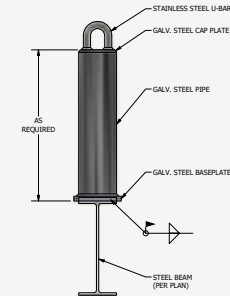
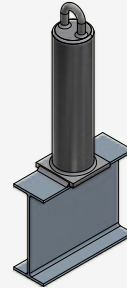


## RA-3100

### Weldable Roof Anchor with Base Plate

Designed with integrated base plates to facilitate proper welded connections.

- Stainless Steel: Type 304 (FY = 30 KSI)
- Steel Pipe: ASTM A500 (FY = 42 KSI)
- Steel Plate: ASTM GR50 (FY = 50 KSI)

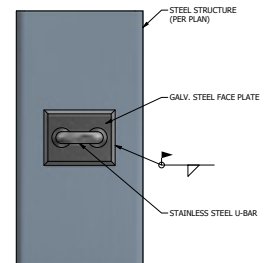
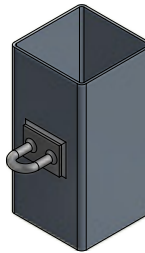


## WA-3000

### Weldable Wall Anchor

Compatible with structural steel applications and used for field welded attachments.

- Stainless Steel: Type 304 (FY = 30 KSI)
- Steel Plate: ASTM GR50 (FY = 50 KSI)

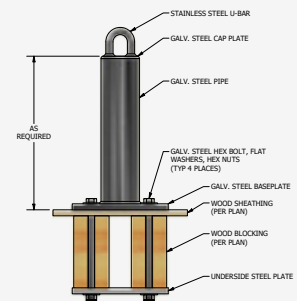
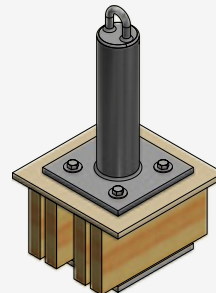


## RA-7400

### Wood Structure Mount Roof Anchor

Configured for lasting performance and integration with reinforcement members.

- Stainless Steel: Type 304 (FY = 30 KSI)
- Steel Pipe: ASTM A500 (FY = 42 KSI)
- Steel Plate: ASTM GR50 (FY = 50 KSI)
- Galvanized Bolts: ASTM A307A (FU = 60 KSI)



## The Diversified Difference

---

The safety specialists at Diversified Fall Protection will work with you to learn the unique nature of your facility's access needs and potential fall hazards. Then, we will recommend a selection of roof anchors to meet your needs and to ensure OSHA compliance.

### **But our support doesn't end there...**

We are committed to educating our customers about all things fall protection, so we provide reliable resources and turnkey service, from design and fabrication to installation, training and system recertification. Partner with DFP to protect your company's assets and keep your employees safe.



Represented by:



**Elevating safety standards**  
**FallProtect.com**

24400 Sperry Drive  
Cleveland OH 44145

(866) 907-1367

Designed and manufactured in the USA 